

TIMBER CRIB

PHYSICAL PROPERTIES

600 mm Header	mm	600mm x 92mm x 38mm
750 mm Header	mm	750mm x 92mm x 38mm
900 mm Header	mm	900mm x 92mm x 38mm
1200 mm Header	mm	1200mm x 92mm x 47mm
1650 mm Header	mm	1650mm x 92mm x 47mm
Notch in header 13mm deep x 38mm wide, 45mm from end		
Stretchers	mm	2200mm x 92mm x 38mm
		2400mm x 92mm x 38mm

DELIVERY INFORMATION

Headers and Stretchers per pallet	Varies depending on order
-----------------------------------	---------------------------

GENERAL PROPERTIES

The timber components are manufactured for purpose from Radiata Pine. It is treated in accordance with the New Zealand standard MP/ NZS 3640 H5; this exceeds the durability requirement in British Standard BS5268 Part 5 also referred to in BS8002. **This product has a design life in excess of 60 years.**

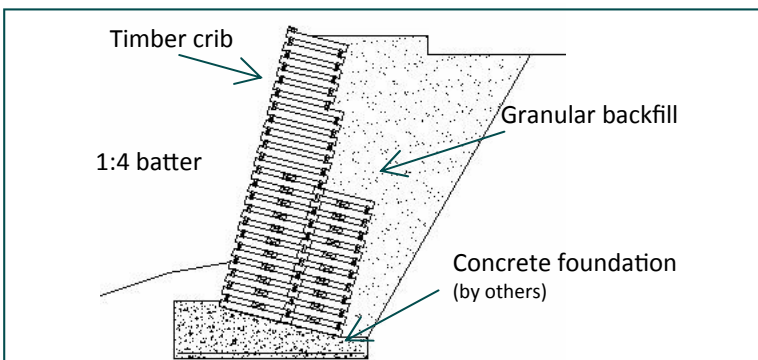
Timber is sourced from sustainable sources within managed forests with traceability of supply. Please inform us this is a requirement for your project.

The wall is a mass gravity retaining wall on a concrete foundation and the design for any given situation will depend on the local soil conditions and design live load to be accommodated. The normal face batter used is 1:4 but can be varied in certain circumstances. Designed to comply with BS8002:1994—Code of Practice for Earth Retaining Structures.

Construction of the wall should be in accordance with clause 4.2.7.5 of BS8002 and Maccaferri Installation Guidelines. The fill material to the cribwork structure should be a clean, graded stone; 100mm down to 50mm.

Any damage detected during the life of the structure should be rectified promptly on the advice of Maccaferri Ltd.

Maccaferri Timber Crib is FSC Approved. For more information on FSC please visit www.fsc.org.



For the optimisation and improvement process of the technical characteristics of the products, the manufacturer reserves the right to modify the standard characteristics of the product without any notice. The information contained herein are to the best of our knowledge accurate, but since the circumstances and conditions in which it may be used are beyond our control, we do not accept any liability for any loss or damage, however arising, which results directly or indirectly from the use of such information nor we do offer any warranty or immunity against patent infringement.

Maccaferri Ltd - Head Office 7600 The Quorum, Oxford Business Park, North, Garsington Road, Oxford, OX4 2JZ T: 01865 770555 F: 01865 774550 E: oxford@maccaferri.co.uk Web: www.maccaferri.co.uk	Area offices Perth: T: 01738 621317 F: 01738 442283 Belfast: T: 028 9026 2830 F: 028 9026 2849 Dublin: T: 01 885 1662 F: 01 885 1601 Web: www.maccaferri.ie	E: perth@maccaferri.co.uk E: belfast@maccaferri.co.uk E: dublin@maccaferri.ie	
---	---	---	--